



# Strategic Update from the EPSRC

Dr Jakob Sprickerhof

Portfolio Manager: Built Environment, Infrastructure and Urban Systems

EPSRC



# EPSRC central to UK prosperity

## RESEARCH COUNCILS

RCUK  
AHRC  
BBSRC  
ESRC  
MRC  
NERC  
STFC

## GOVERNMENT DEPARTMENTS

BEIS  
DECC  
HO  
DoH  
DfT  
MOD

## UK PROSPERITY



## ACADEMIA

University partners  
Learned societies  
Professional bodies

## INDUSTRY

Innovate UK  
Leadership Councils  
Strategic Partners



The Outcomes framework provides

- III an **exciting, strategic expression** of our plans which captures our value-add to the nation
- III contextual opportunities for **seeking additional funding from government**
- III a **framework to help researchers** to think about their contribution to national and global challenges and to stimulate collaboration



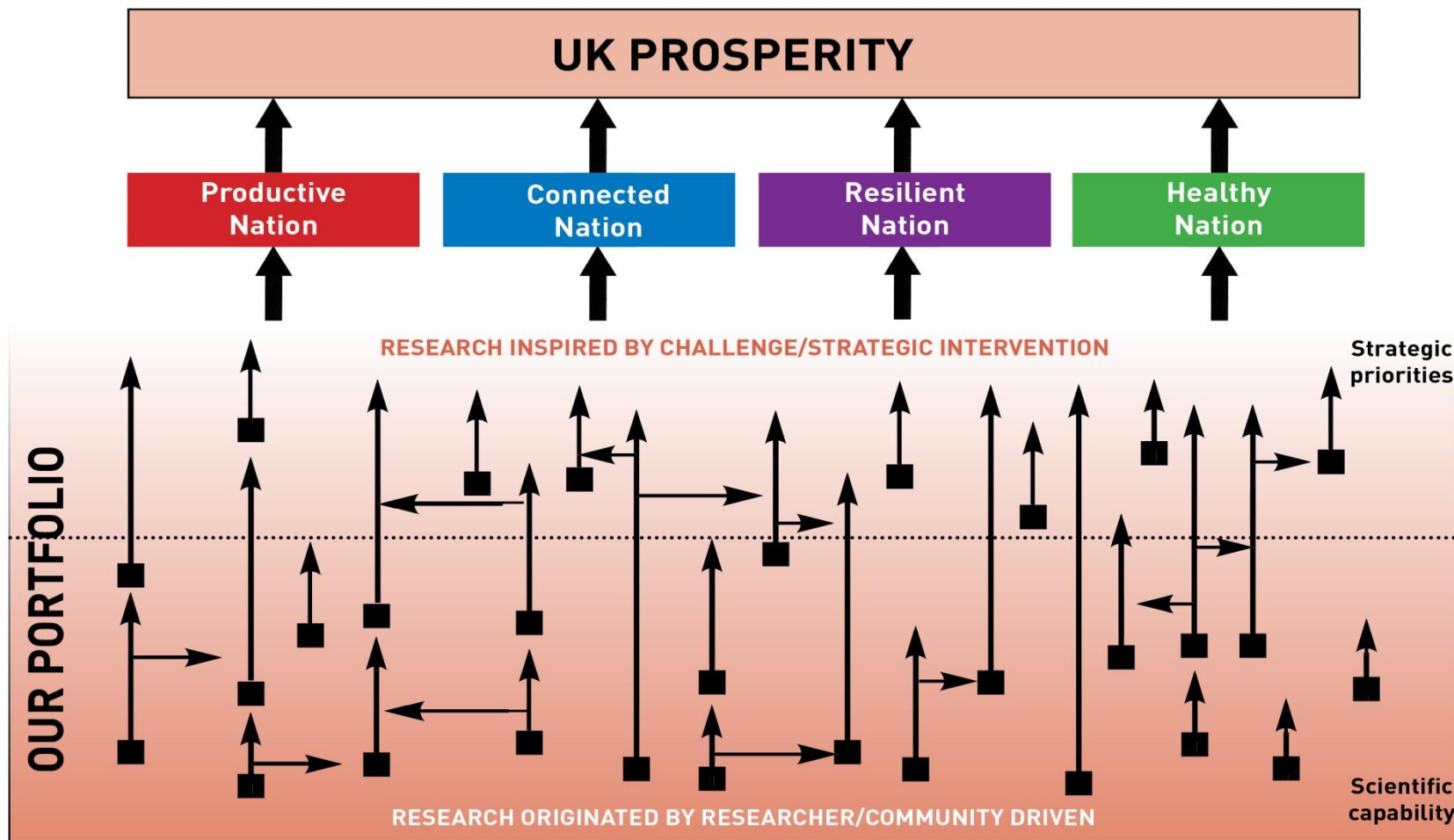
It is **NOT** intended to tightly prescribe research activities

We continue to welcome long-term discovery-led research

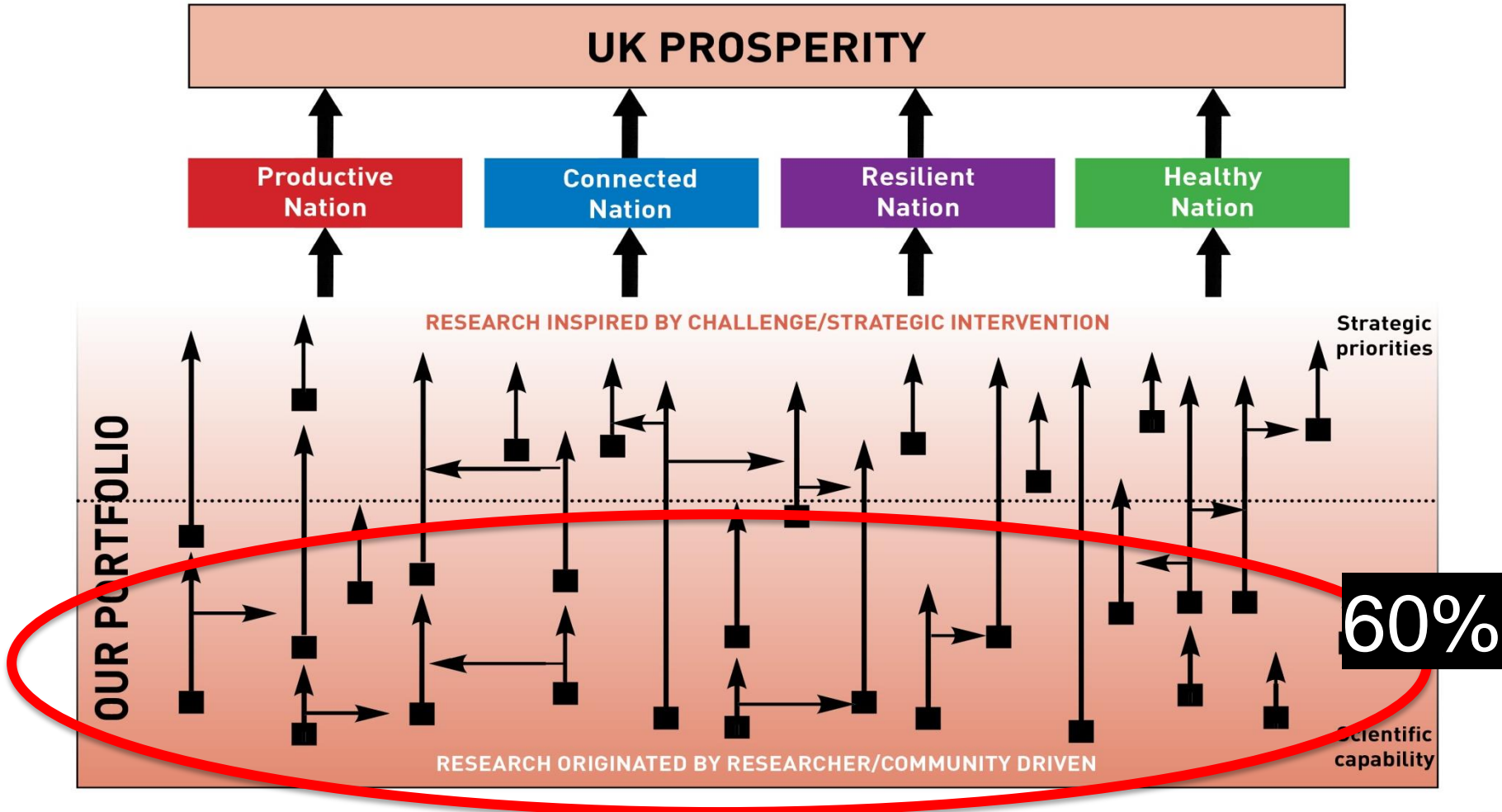
See:

<https://www.epsrc.ac.uk/newsevents/news/deliveryplanupdate/outcomesandambitions/>

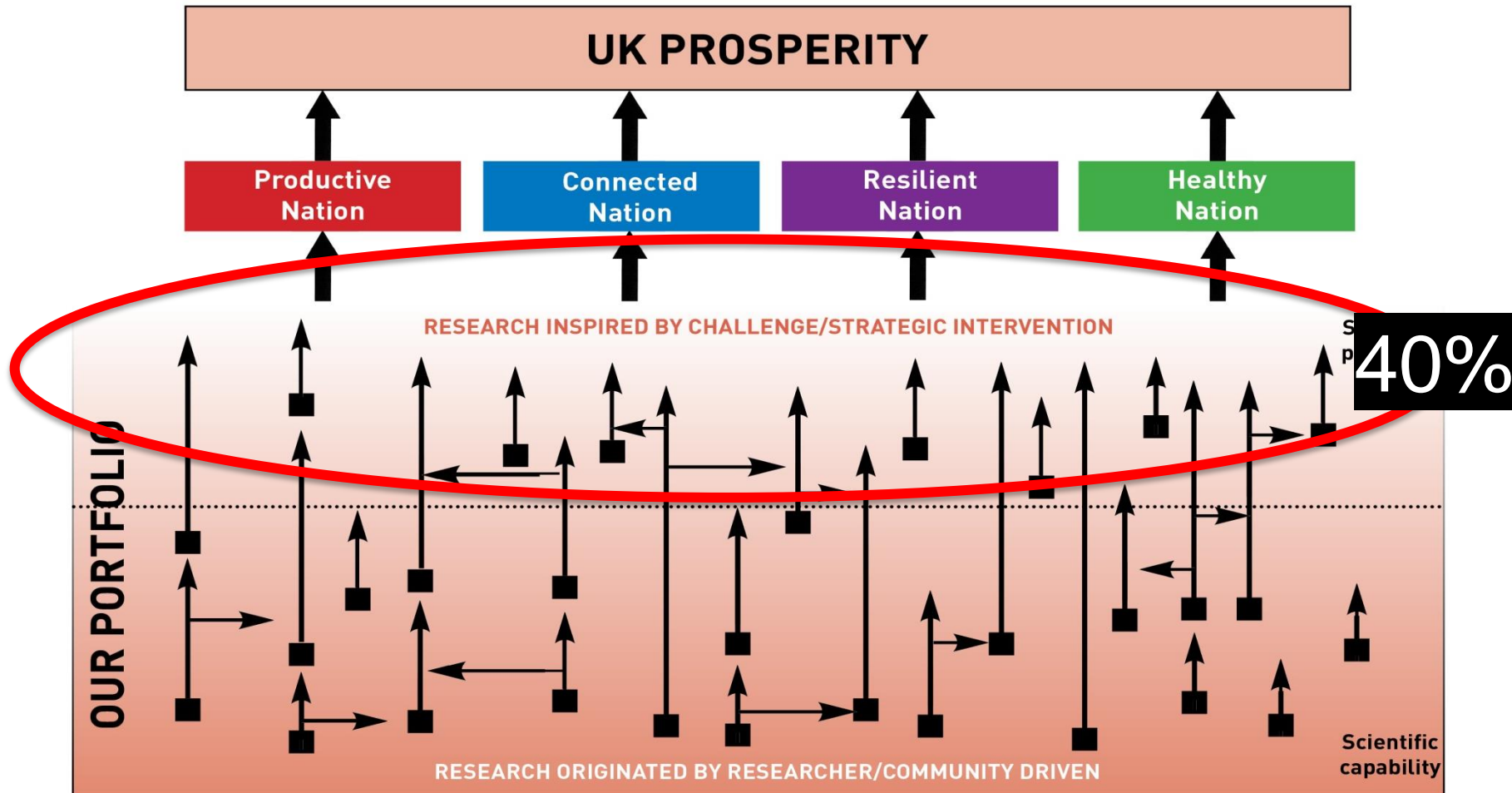
## Science for a successful nation

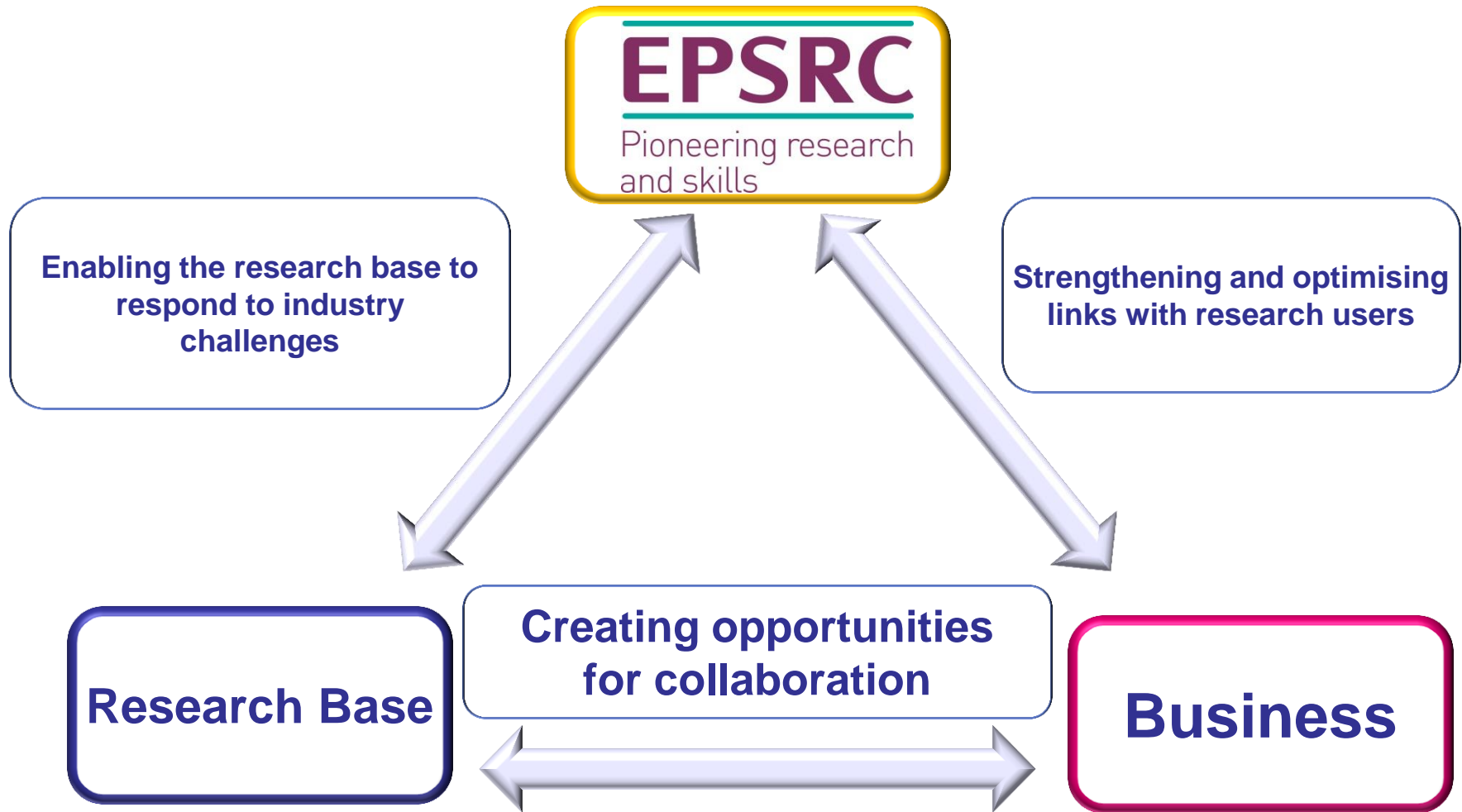


## Science for a successful nation



## Science for a successful nation



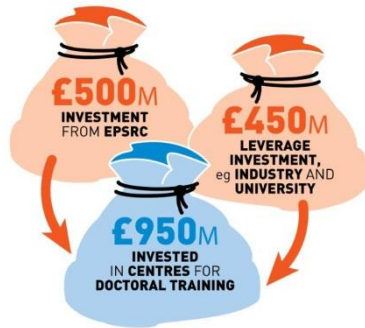


# Current Business Engagement Portfolio

## Centres for Doctoral Training



THE **NUMBER**  
OF **CENTRES**

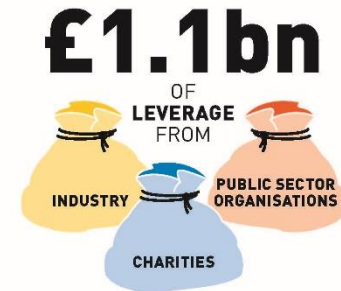


**~400** new spin out companies from 2008 to 2013 based on EPSRC research

with turnover **~£4 bn** and employing **~50,000** staff



OVER **3,553**  
ORGANISATIONS INVOLVED IN  
COLLABORATIVE  
EPSRC GRANTS



Over **60%** of business  
partnerships are with SMEs





# Vision for Business Engagement

*“to ensure the investments made by EPSRC are relevant to business, evidenced by increased business involvement and investment and resulting in impact and growth creation.”*

## **Visibility**

That EPSRC and its investments have high levels of visibility and accessibility for business communities

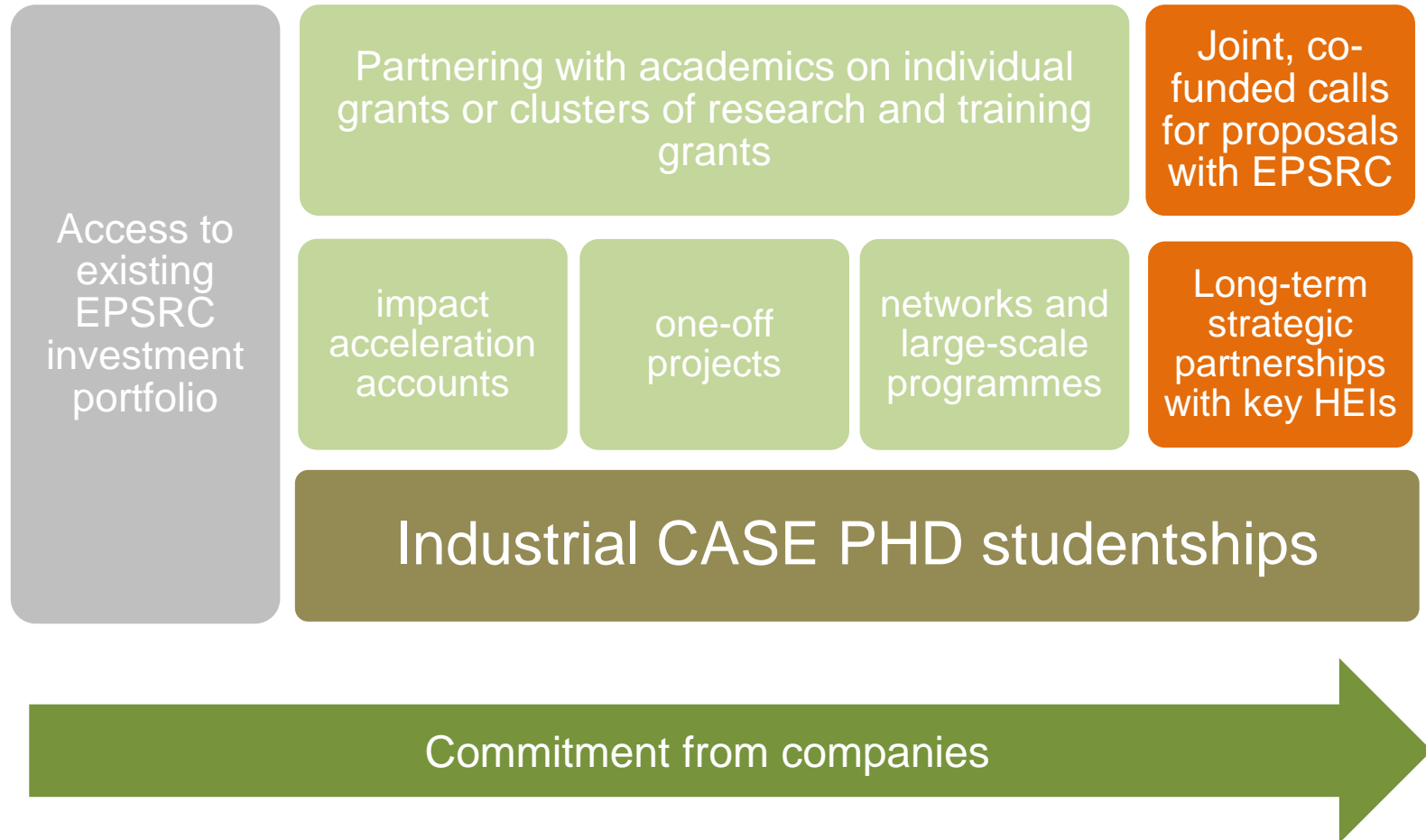
## **Engagement**

That EPSRC investments continue to attract high levels of business investment and EPSRC policies and processes aid, rather than hinder, business engagement and investment.

## **Influence**

That our strategy and investments are influenced by the views of business and that we influence the ways in which business consider and interact with the research base.

# A portfolio of approaches to joint funding



## New coatings improve performance of aero-engine

- New coatings developed at Cranfield University with support from EPSRC, the EU and industry, are being used in the aerospace industry to **improve performance and increase cost savings**
- Reducing fuel consumption by **over one per cent** and consequently CO2 emissions
- Saving operators **£3.4bn** in fuel costs over the 20 year lifetime of the engine
- Used on the Airbus 380 and Boeing Dreamliner engines enabling Rolls-Royce to **increase its market share** for large civil aircraft engines



## Staying on track

- Research by EPSRC-funded computer scientists at the University of Leeds led to the creation of software used by more than **40 bus and train companies** to construct effective crew timetables, deliver cost-efficient public transport and improve services
- Delivered savings of over **£230M** in the UK alone between 2008 and 2013
- Spin-out company, **Tracsis**, formed in 2004 to commercialise the software
- Software used by **70% of train companies** operating in the UK as well as in Sweden, Australia and New Zealand
- Floatation of Tracsis on London Stock Exchange in 2007 with market capitalisation of **nearly £53M** at the end of 2013 and annual turnover of more than **£10M**

